

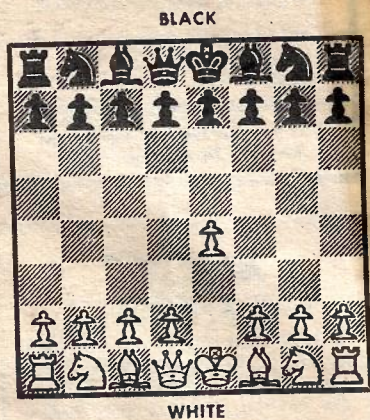
Chess

A nasty helpmate

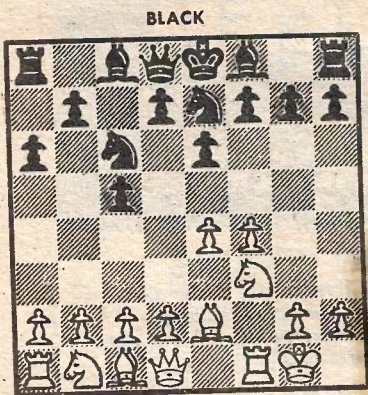
EWEN GREEN, captain of the New Zealand men's team at the chess Olympiad in Haifa, Israel, was the only one of us to have attended an Olympiad before. He acted as a steady influence and was a reliable player. Before the following game he jokingly remarked he was playing a player who barely managed to gain equality with White in the opening!

A POMMY joker went around the Olympiad showing this particularly nasty specimen of a helpmate.

Meste . . . sorry, A. N. Other, would give this position to a group with the instructions that they must construct a helpmate situation where Black's 5th move is



- SICILIAN**
- | | |
|------------------------|---------------------------|
| J. Kolbak
(Denmark) | E. Green
(New Zealand) |
| 1. e4 | c5 |
| 2. f4 | e6 |
| 3. Nf3 | Nc6 |
| 4. Bb5 | N(g)e7 |
| 5. O-O | a6 |
| 6. Be2 | |

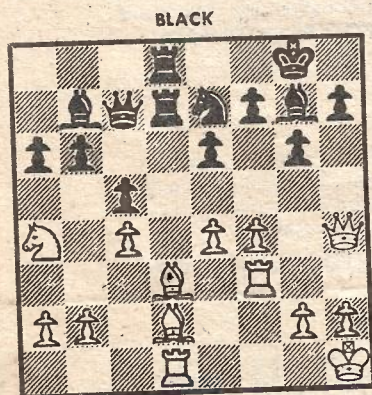


White has indeed managed only bare equality.

- | | |
|----------|-----|
| 6. . . . | g6 |
| 7. d3 | Bg7 |
| 8. c4 | O-O |
| 9. Nc3 | d5 |

The normal freeing break. Black has already claimed the initiative.

- | | |
|----------|--------|
| 10. Kh1 | b6 |
| 11. Qe1 | Ra7! |
| 12. Bd2 | Rd7 |
| 13. Rd1 | dxc4 |
| 14. dxc4 | Bb7 |
| 15. Na4 | Qc7 |
| 16. Qh4 | Nd4 |
| 17. Bd3 | Nxf3 |
| 18. Rxf3 | R(f)d8 |



With Black's straightforward development versus the Dane's mixture of plans, the outcome is already apparent.

- | | |
|--------------|------|
| 19. Bc3 | Bxe4 |
| 20. Rh3 | h5 |
| 21. Bxg7 | Kxg7 |
| 22. Qe1 | Qc6 |
| 23. Qc3 ch | f6 |
| 24. Resigns. | |

The dual threat of 24 . . . Qxa4 and 24 . . . Bxg2 ch forces White's capitulation. A fine victory for Green, and the New Zealand team — we beat Denmark 2½/1½.

knight takes rook checkmate. White's first move must be 1, e4.

This is one of the most difficult problems I have come across, and at the Olympiad one crowd got so annoyed they invested some three hours and a bottle of brandy to get the solution from him.

The humorous aspect of the problem is the reaction of onlookers when they see a number of top chess-players staring intently at the board after the move 1, e4!

SOLUTION . . . next Olympiad!

MURRAY CHANDLER